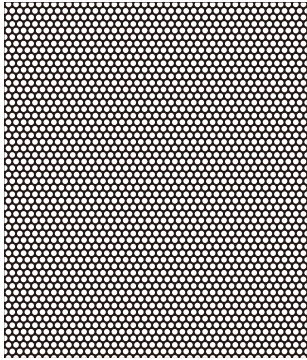
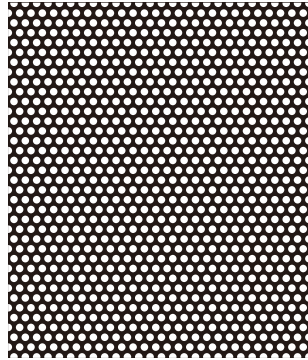


丸孔 60°

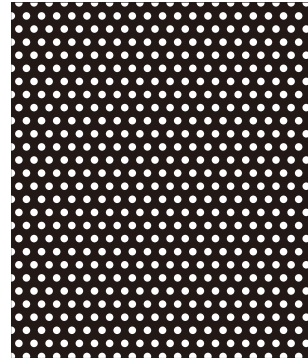
Round Perforations 60°



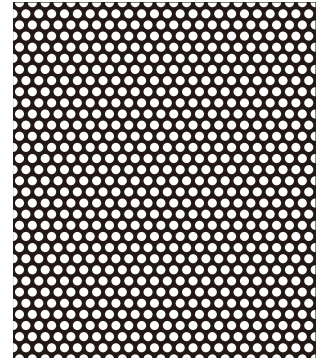
1 0.75φ × 1.0P
開孔率 50.9%



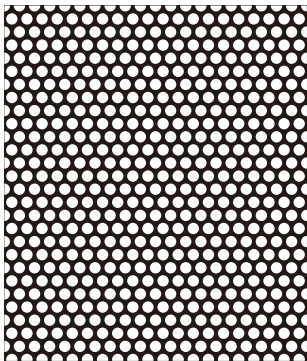
2 1.0φ × 1.5P
開孔率 40.2%



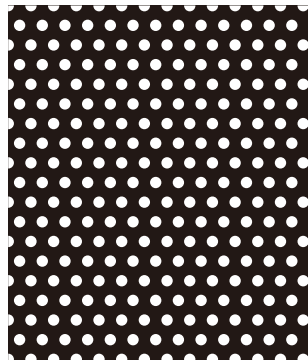
3 1.0φ × 2.0P
開孔率 22.6%



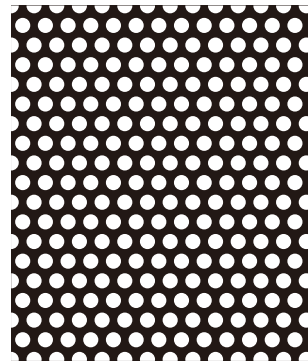
4 1.2φ × 1.7P
開孔率 45.1%



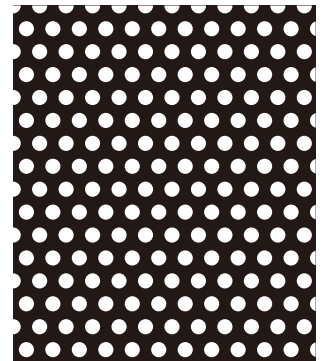
5 1.5φ × 2.0P
開孔率 50.9%



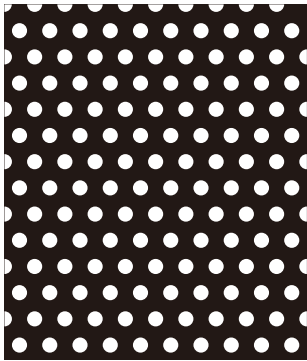
6 1.5φ × 3.0P
開孔率 22.6%



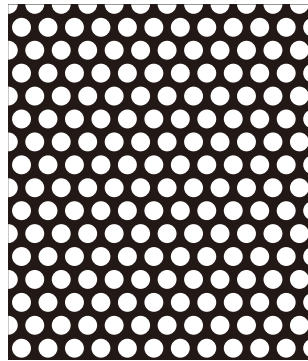
7 2.0φ × 3.0P
開孔率 40.2%



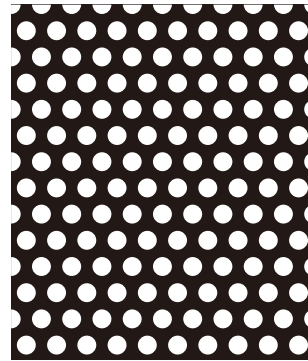
8 2.0φ × 3.5P
開孔率 29.6%



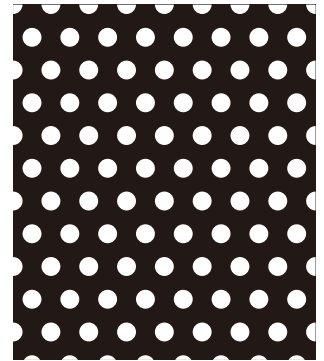
9 2.0φ × 4.0P
開孔率 22.6%



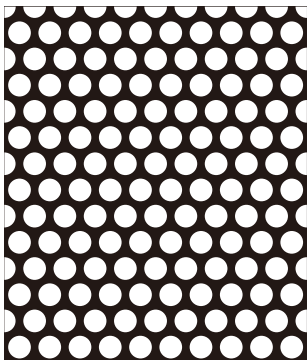
10 2.5φ × 3.5P
開孔率 46.2%



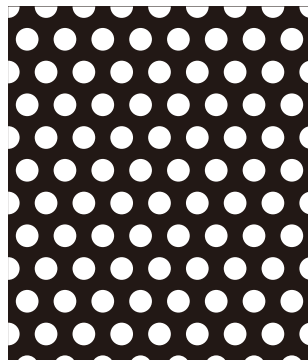
11 2.5φ × 4.0P
開孔率 35.4%



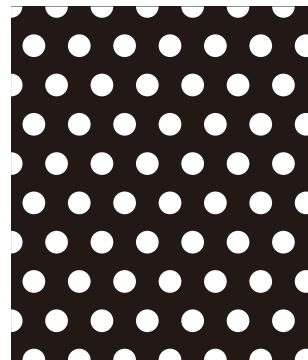
12 2.5φ × 5.0P
開孔率 22.6%



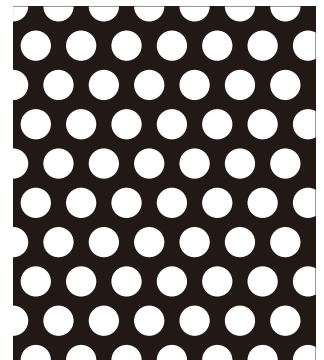
13 3.0φ × 4.0P
開孔率 50.9%



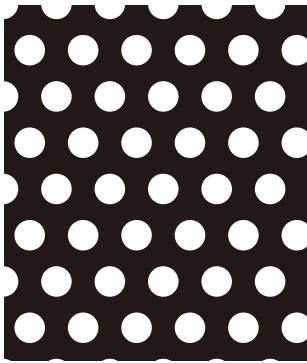
14 3.0φ × 5.0P
開孔率 32.6%



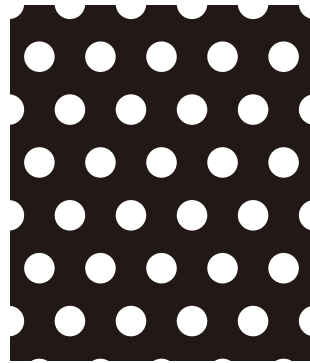
15 3.0φ × 6.0P
開孔率 22.6%



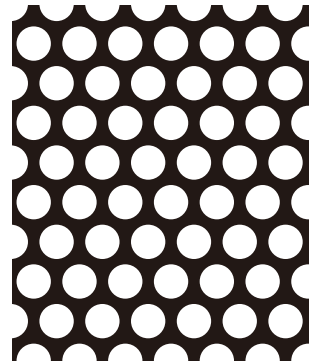
16 4.0φ × 6.0P
開孔率 40.2%



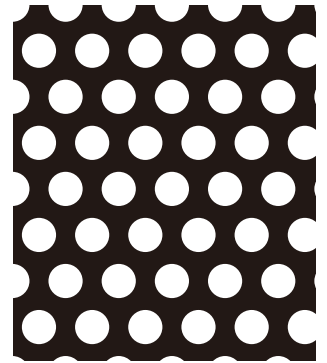
17 4.0φ × 7.0P
開孔率 29.6%



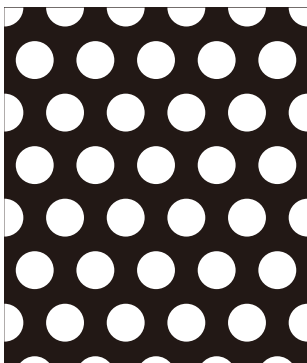
18 4.0φ × 8.0P
開孔率 22.6%



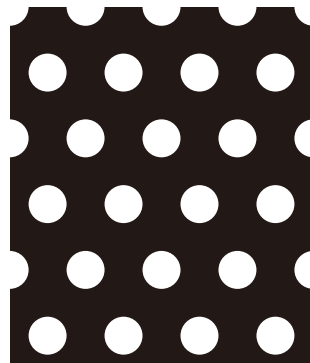
19 4.5φ × 6.0P
開孔率 50.9%



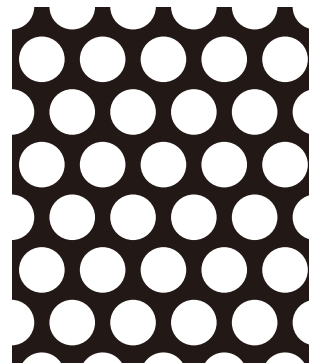
20 4.5φ × 7.0P
開孔率 37.4%



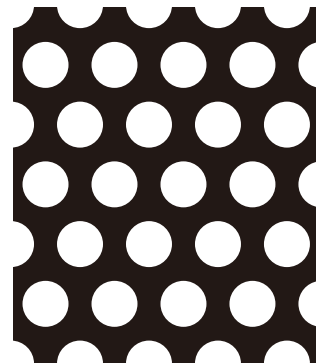
21 5.0φ × 8.0P
開孔率 35.4%



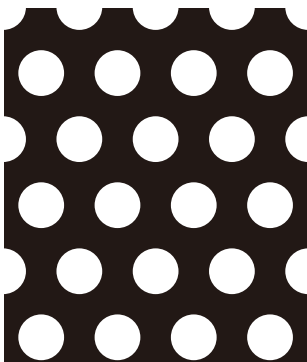
22 5.0φ × 10.0P
開孔率 22.6%



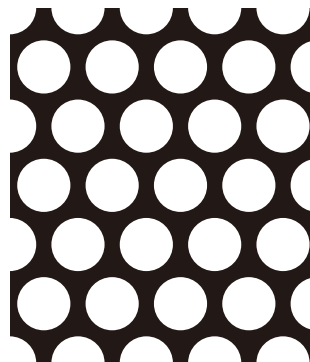
23 6.0φ × 8.0P
開孔率 50.9%



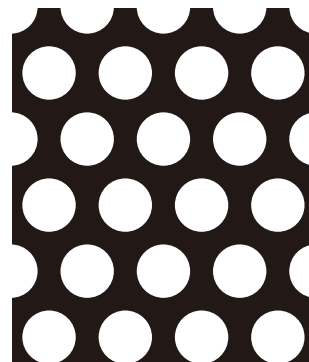
24 6.0φ × 9.0P
開孔率 40.2%



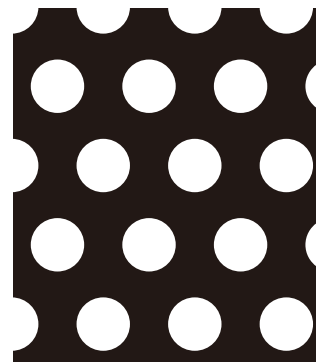
25 6.0φ × 10.0P
開孔率 32.6%



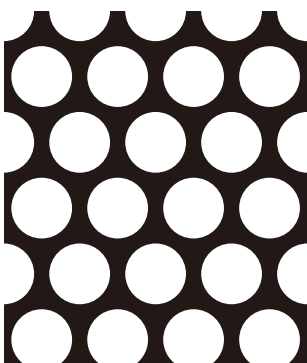
26 7.0φ × 9.0P
開孔率 54.8%



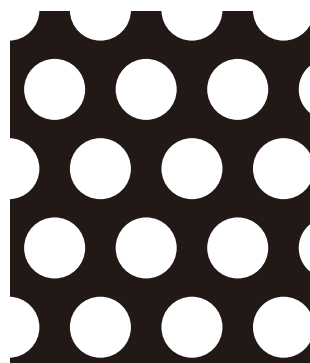
27 7.0φ × 10.0P
開孔率 44.4%



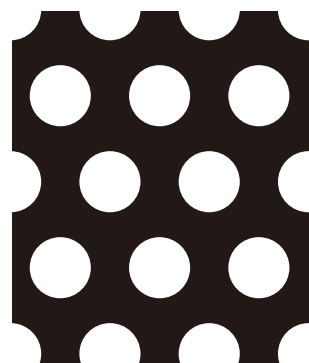
28 7.0φ × 12.0P
開孔率 30.8%



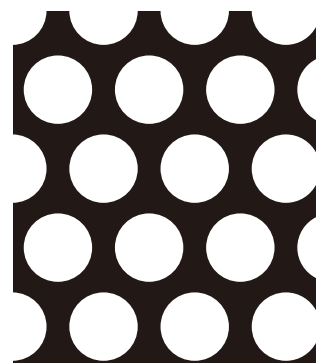
29 8.0φ × 10.0P
開孔率 57.9%



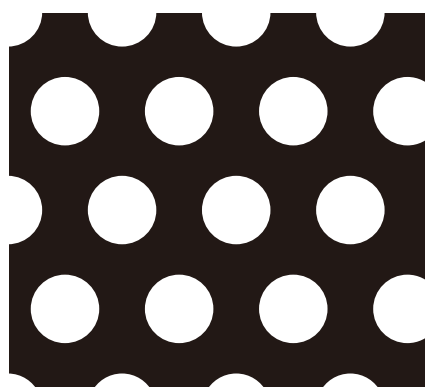
30 8.0φ × 12.0P
開孔率 40.2%



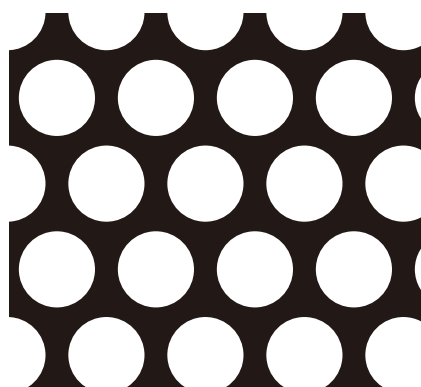
31 8.0φ × 13.0P
開孔率 34.3%



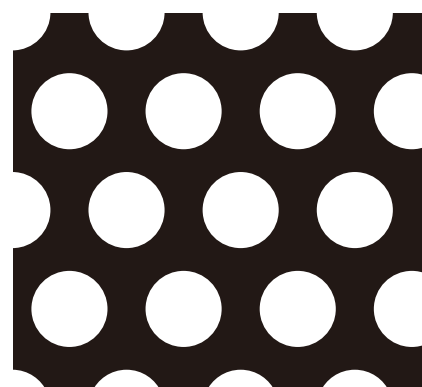
32 9.0φ × 12.0P
開孔率 50.9%



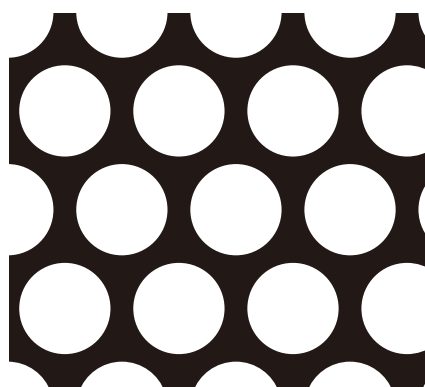
33 9.0φ × 15.0P
開孔率 32.6%



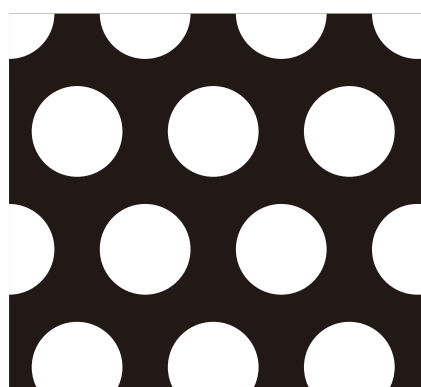
34 10.0φ × 13.0P
開孔率 53.6%



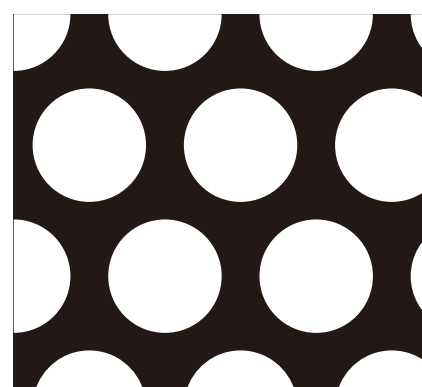
35 10.0φ × 15.0P
開孔率 40.2%



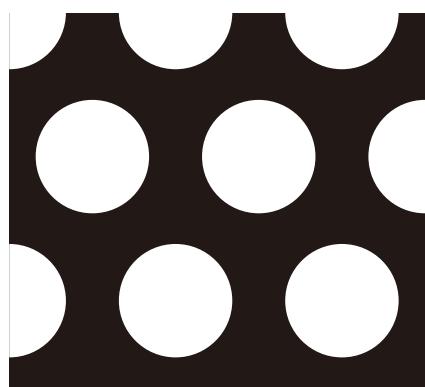
36 12.0φ × 15.0P
開孔率 57.9%



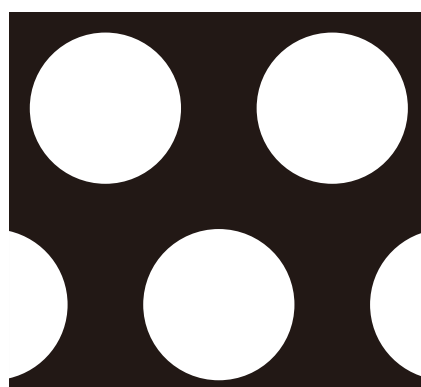
37 12.0φ × 18.0P
開孔率 40.2%



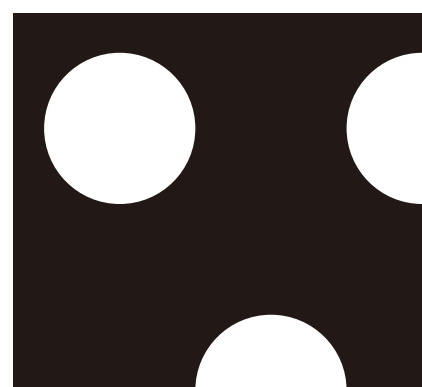
38 15.0φ × 20.0P
開孔率 50.9%



39 15.0φ × 22.0P
開孔率 42.0%



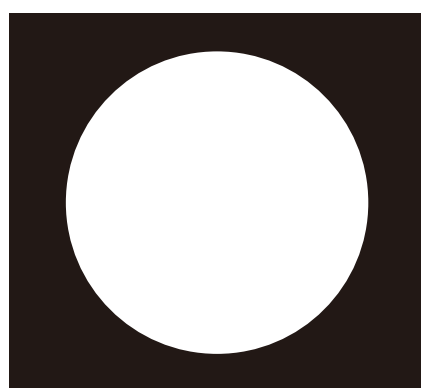
40 20.0φ × 30.0P
開孔率 40.2%



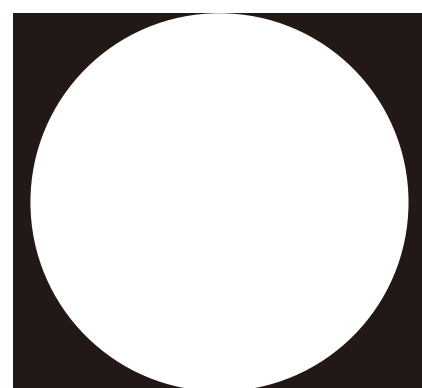
41 20.0φ × 40.0P
開孔率 22.6%



42 30.0φ × 40.0P
開孔率 50.9%



43 40.0φ × 60.0P
開孔率 40.2%



44 50.0φ × 80.0P
開孔率 35.3%