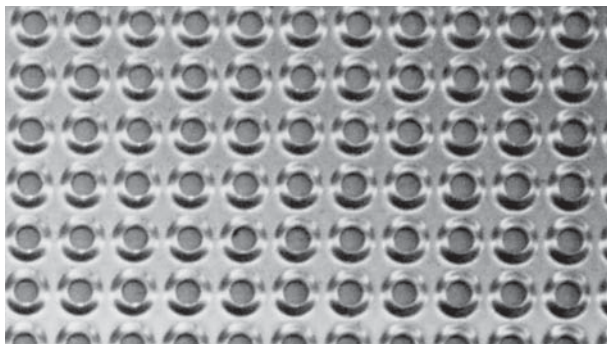
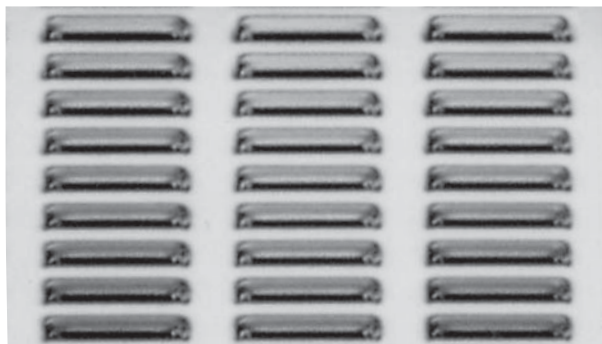


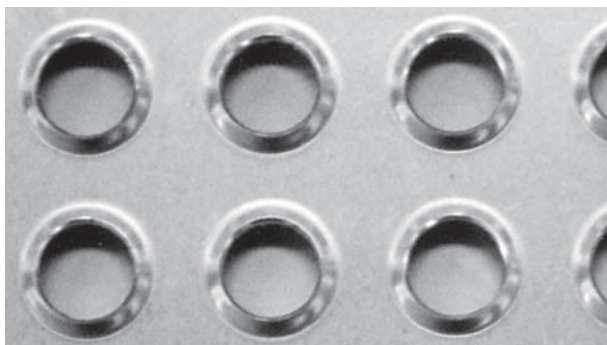
## バーリング Burring



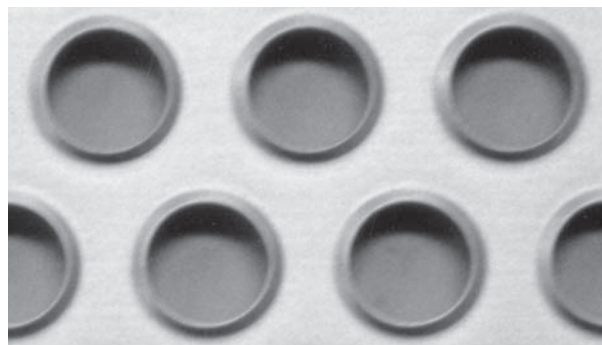
139  $3.3\phi \times 7.0P$   
(17.5%)



140  $(3.5 \times 20.0) \times (5.0 \times 25.5)P$   
ルーバー



141  $12.0\phi \times 20.0P$   
(28.3%)



142  $15.0\phi \times 24.0P$   
(35.4%)

カッコ内%は開孔率です  
Parentheses% is the hole area rate

バーリングの高さはお問い合わせください  
Please contact us for the height of the embossed and burring